

## CAPABILITIES STATEMENT

Pennsylvania Convention Center Cooling Tower Replacement, Philadelphia, PA



**DUNS:** UPON REQUEST

### CERTIFICATIONS

**CAGE:** 7RKA9

**8(a)**, DBE, MBE

### NAICS CODES:

238220 PLUMBING AND HVAC  
236000 CONSTRUCTION OF BUILDINGS  
237110 WATER AND SEWER LINE CONSTRUCTION  
238210 ELECTRICAL CONTRACTOR  
541330 ENERGY MANAGEMENT CONSULTING  
541340 DRAFTING SERVICES  
561200 FACILITY SUPPORT SERVICES

### KEY PERSONNEL

MICHAEL BROWN (EXT 102) – CEO / BIM MGR  
RON LIBERATI (EXT 109) – PRESIDENT  
DOMINIC MENTA (EXT 101) – VP  
AL HALABI (EXT 201) – DIR OF CONSTRUCTION  
RAY SHEETS (EXT 203) – DIRECTOR OF ENERGY

### PATENTS (PENDING):

**US2015035845:** HVAC AIRFLOW OPTIMIZATION

### BONDING:

4 MILLION PER PROJECT, 12 MILLION AGGREGATE  
CONTACT: ALLSTATES BONDING, JOHN WAITE  
E: JWAITE@ALLSTATESBONDING.COM

**ANNUAL REVENUE:** \$10,000,000

### CONTACT INFO

ECSI360 – JEN RILEY (EXT 103)  
4623 South Broad Street  
Navy Yard  
PHILADELPHIA, PA 19112  
P: 215-904-5097 F: 215-904-5691

EMAIL: [JRILEY@ECSI360.COM](mailto:JRILEY@ECSI360.COM)

WEB: [WWW.ECSI360.COM](http://WWW.ECSI360.COM)

## ENVIRONMENTAL CONSTRUCTION SERVICES, INC.



[WWW.ECSI360.COM](http://WWW.ECSI360.COM)

### COMPANY SUMMARY

Environmental Construction Services, Inc. is a construction, energy and facilities management firm based out of the Navy Yard in Philadelphia, Pennsylvania. We fulfill your construction needs through quality and service with a focus on safety, integrated project delivery, and energy efficiency. ECSI360 helps building owners and facilities managers design, build or retrofit, and maintain energy-efficient facilities within specified budgets. Our project managers, design engineers, and energy experts average over 25 years of construction and maintenance experience.

### CORE COMPETENCIES

- DESIGN BUILD CONSTRUCTION
- ENERGY MANAGEMENT
- SUSTAINABILITY
- BUILDING INFORMATION MODELING (BIM)
- ASSET MANAGEMENT
- MECHANICAL, ELECTRICAL AND PLUMBING CONTRACTING
- FACILITIES MANAGEMENT
- PERFORMANCE CONTRACTING
- GENERAL CONTRACTING
- VALUE ENGINEERING
- FACILITIES MAINTENANCE & SERVICE

### CORPORATE EXPERTISE

ECSI360 is among the few advanced and experienced construction companies in the country that have effectively delivered true BIM to FM integration, which is the art of creating design documents, seamlessly converting them to shop and erection sets, and then transferring all of the data electronically into an asset management system.

### NOTABLE PROJECTS

PROJECT NAME	AMOUNT
COZEN O'CONNOR LIBERTY ONE RELOCATION	\$1.6 MILLION
PHILADELPHIA VA – AC19 & BLOOD LAB RENOVATION	\$2.9 MILLION
COMCAST TECH AND INNOVATION CENTER	\$4.1 MILLION
NSA DDC AND ENERGY SAVINGS	\$1.0 MILLION

**ACHIEVEMENTS:** SBA 2014 Eastern PA Minority Small Business of the Year, Greater Philadelphia Chamber of Commerce Technological Excellence Award Winner 2015, Goldman Sachs 10,000 Small Businesses Graduate.



### ECSI 360 FINANCIAL GROWTH



2015 Inc. 5000 Rank #229

3-Year Growth 1,907%

2014 Revenue \$7.3 M

Jobs Added 37

#### 2015 INC. 5000 HONORS

4 Top Construction companies

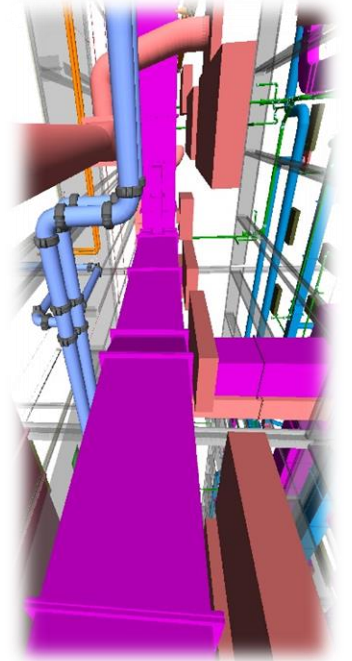
6 Philadelphia Metro Area

3 Top Pennsylvania companies



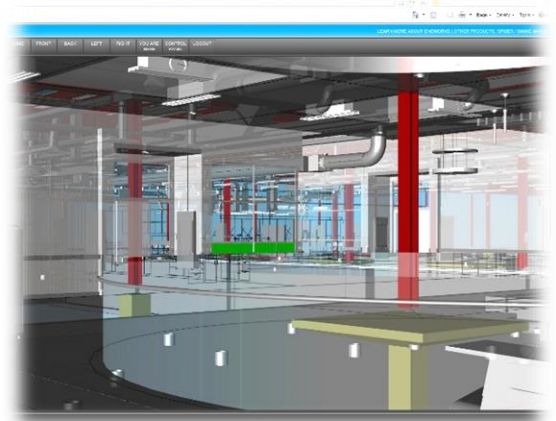
### OUR APPROACH TO CONSTRUCTION USING BUILDING INFORMATION MODELING

ECSI 360 utilizes engineers and CAD tradespeople with heavy experience in construction to quickly determine the design intent of the engineering community while understanding the field conditions and cost implications of various design options. Our firm will work with an owner to ensure that three key members of their team: Designer, General Contractor and Facilities Operator are working together in a unified model to provide real-time answers through the use of pin point accurate 3D Models. The linear approach of construction that many times requires several iterations between the design and contracting communities in order to deliver a project on time and within budget are streamlined through a more collaborative approach. Our methodology can only be achieved with the use of integrated software packages and databases that allow the engineering community to effectively model while the construction community can plan, estimate, construct, manufacture and maintain facilities with minimal to no duplication of efforts.



### 3D APPROACH TO FACILITIES MANAGEMENT (FM)

ECSI360 utilizes a 2D/3D asset management integration software that allows for as-built models to be viewed using your web browser. Having a visual interface to complex asset management systems significantly reduces hours spent trying to find and adequately service work orders. Furthermore, building automation systems, documents, O&M manuals and warranties can easily be viewed from the interface allowing for better organization, planning, inventory management and work order scheduling. Future retrofits are also simplified since all documentation is housed in one location.



Golden Mammoth, Faena Hotel Miami, FL



Corporate Headquarters, Philadelphia Navy Yard



Cooling Tower Replacements, Philadelphia